

**Application note : How to bypass the IRS / PWR in case of hard failure.**  
**Version 1.0**  
**Date 29.06.2010**

---

## Safety:

**The procedure described in this document must be carried out only by personnel qualified and trained to work with low voltage electrical equipment in an industrial environment.**

**The procedure described in this document will suppress the alarms coming from the IRS/PWR and thus must be used only after an examination of the potential consequences for persons and equipments..**



The installation, configuration, commissioning and maintenance of the IRS products must only be carried out by personnel qualified and trained to work with low voltage electrical equipment in an industrial environment.



The front door should not be opened except by competent technicians when connecting or disconnecting the device. Electrical isolation must be ensured between the equipment and the power supply.



In both off and on modes, the IRS regulator doesn't ensure isolation from the power supply. One should pay attention to the fact that electrical shock may occur when touching the lamps or the cables coming from the IRS.



---

## Overview :

For testing and maintenance purposes, it might be necessary to bypass the alarms sent by the IRS and PWR systems.

This note describes the procedure to suppress the alarms coming from a specific box.

---

## PROCEDURE :

### Required :

- 1 PC with SUPERVISOR program installed.
- 1 cross over serial cable with DB9 terminator to connect to the CPU
- The firmware 7.77.olic that can be downloaded from our web site..

**STEP 1 :** Shut down power on the machine.

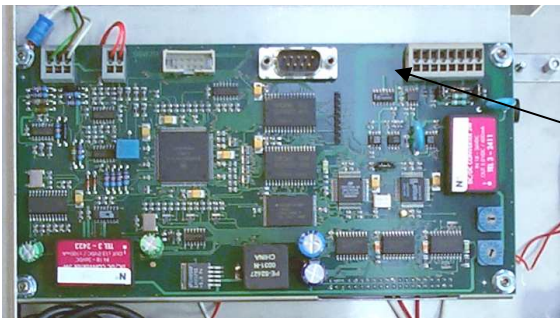
**STEP 2:** Shut down the 24DC powering the IRS/PWR box.

**STEP 3.:** Make sure that the box will not be powered when the machine power will be turned on. On IRS it can be easily done by switching off the 2 breakers inside the box. For PWR is necessary to unplug the power plug.

**STEP 4.** Turn 24 DC on

**STEP 5 :** connect the PC to the box using the serial cable

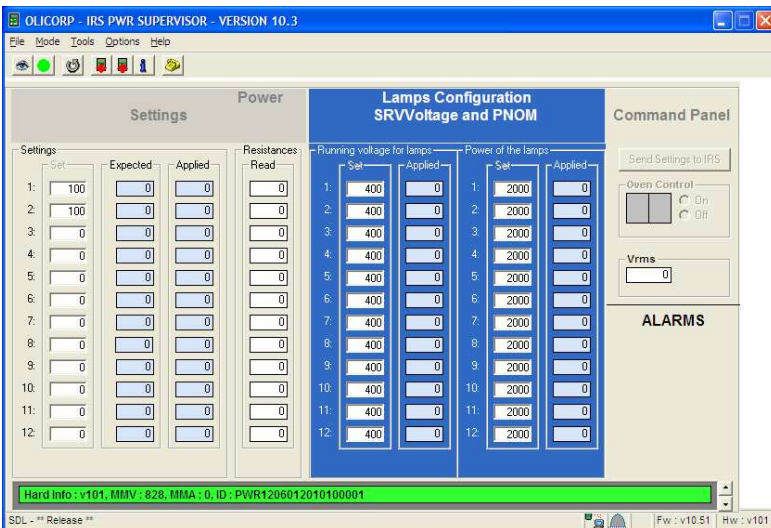
When connecting the computer to the IRS module through the serial link, you have to pay attention to have both devices wired to the same ground to avoid any electrical discharge that could damage either device.



RS232 DB9  
connector

To connect the cable you have to open the cabinet and then to plug to the female connector onto the MPU card. Pay attention to push softly when you plug the connector.

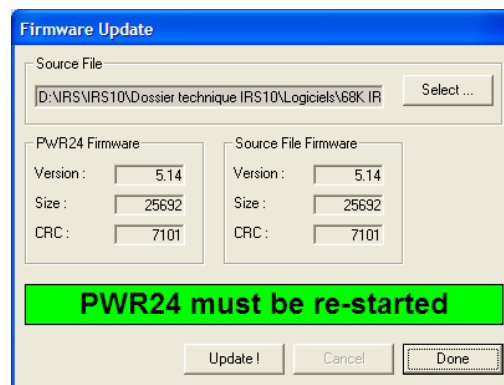
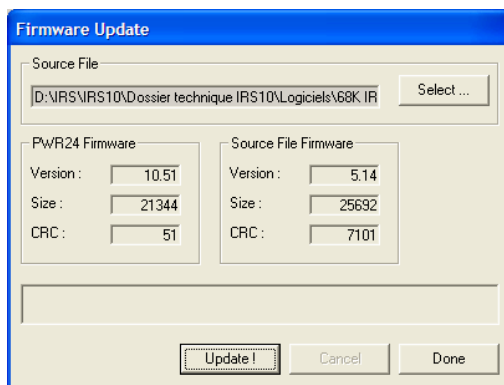
The SUPERVISOR interface looks like :



The connection status is summarized on the lower right part of the window.  
Once started the program tries to connect to the IRS... It takes a few seconds to connect.

## STEP 6 . Firmware update :

From the update window you can select the 7.77.olic firmware (.olic file) and transfer it to the IRS. It takes about 10 sec to transfer the olic file to the IRS. The IRS must be rebooted (24DC off and on) once the installation is finished.



## STEP 7.

Restart the machine. The box will not emit any alarm and will be totally inactive.

To keep the process running, it might be necessary to distribute the power initially set on the associated oven to the other ovens of the machine.

